

# Component and wiring information

for raphnet-tech XHE-3 equivalent PCB kit. (PCB v2)

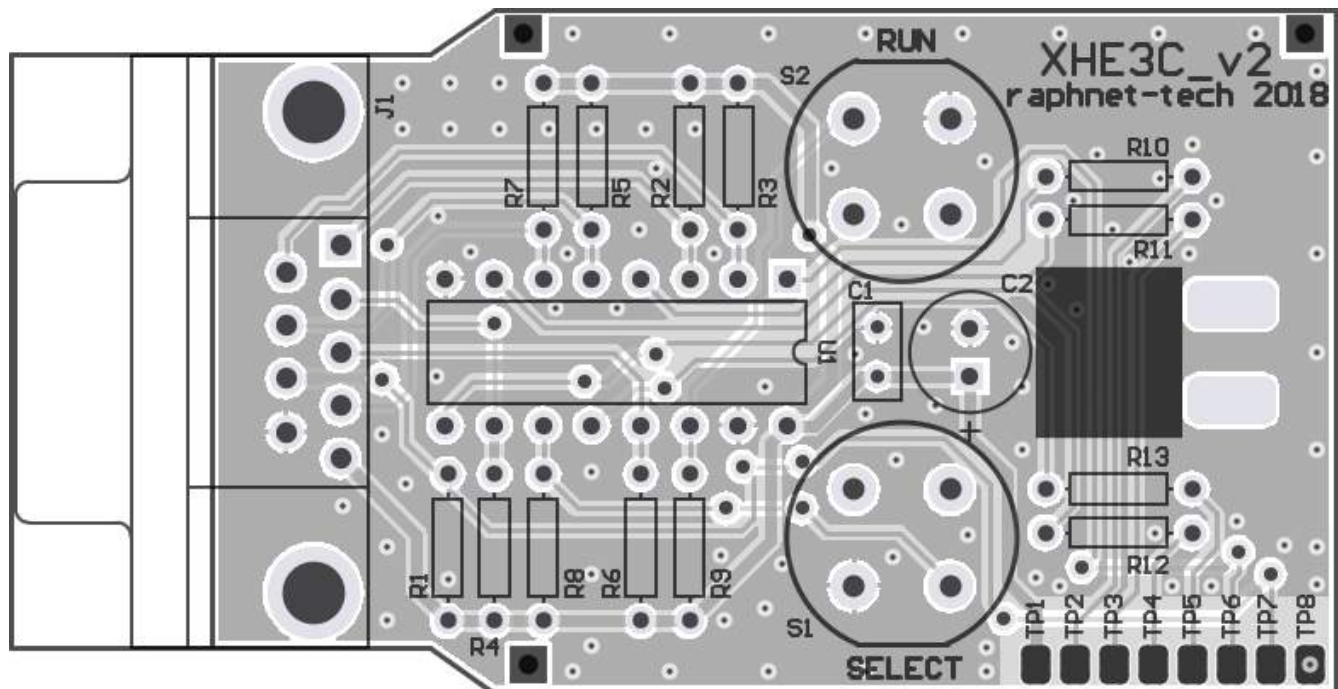
## Product page:

<https://www.raphnet-tech.com/products/xhe3c/index.php>

## Component list:

| Quantity | Designator                         | Description                      |
|----------|------------------------------------|----------------------------------|
| 9        | R1, R2, R3, R4, R5, R6, R7, R8, R9 | 47k resistor                     |
| 4        | R10, R11, R12, R13                 | 330 ohm resistor                 |
| 1        | J1                                 | DB9 connector, male, right-angle |
| 2        | S1, S2                             | Push button, SPST-NO             |
| 1        | U1                                 | Integrated circuit SN74HC157N    |
| 1        | C1                                 | .1uF capacitor                   |
| 1        | C2                                 | 10uF capacitor                   |

## Layout reference:



## Wiring reference:

TP1...TP8 must be wired to a mini-DIN cable. This could be the cable from a broken controller, or a generic mini-DIN 8 cable.

| PCB location | Mini-DIN 8 pin # | Function             |
|--------------|------------------|----------------------|
| TP1          | 1                | VCC                  |
| TP2          | 2                | Button Up / 1        |
| TP3          | 3                | Button Right / 2     |
| TP4          | 4                | Button Down / Select |
| TP5          | 5                | Button Left / Run    |
| TP6          | 6                | SELECT               |
| TP7          | 7                | NOE                  |
| TP8          | 8                | GND                  |

## Schematic:

