

raphnet technologies



QTenki Installation manual English version

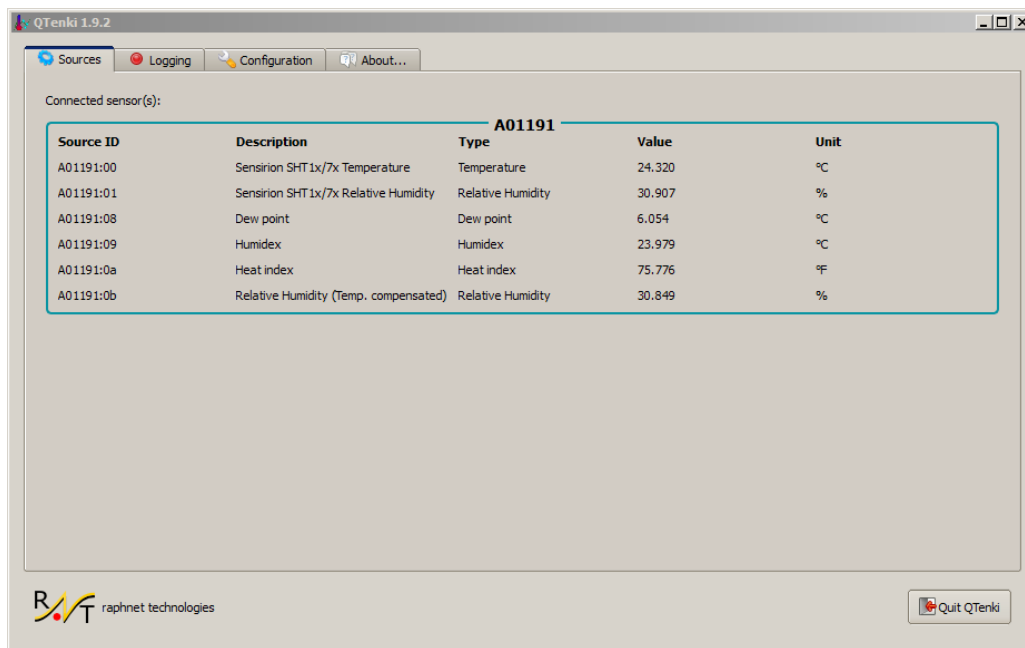


Table of Contents

1) Application installation.....	2
1.1) Extracting the package.....	2
1.2) Installing the USB drivers under win7.....	2
1.3) Installing the USB drivers under winxp.....	4
2) Copyright, Disclaimer and History.....	5
2.1) Copyright.....	5
2.2) Disclaimer.....	5
2.3) Revision history.....	5

1) Application installation

An automated application installer has not yet been written, but manual installation is simple and explained here.

1.1) Extracting the package

Qtenki for windows is distributed in .zip format. Simply extract the files by right-clicking and choosing *extract all* or *extract here*. You may also use an archiver program such as winrar or winzip.

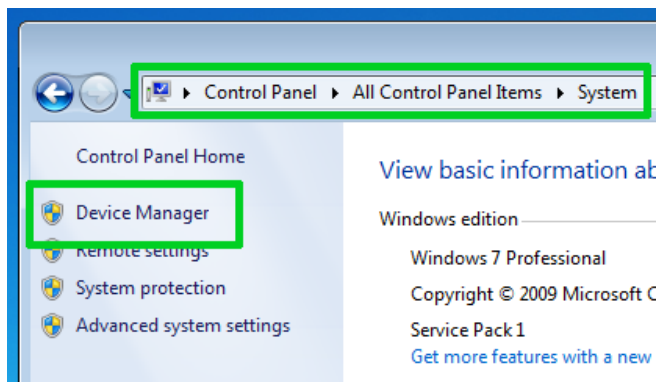
The folder that will be created (eg: usbtenki-1.9.2) contains all the files required to run the application. It is up to you to decide where you will keep it. Possible locations would be:

- On the Desktop
- In My Documents
- Anywhere on your hard drive(s)
- On an USB key

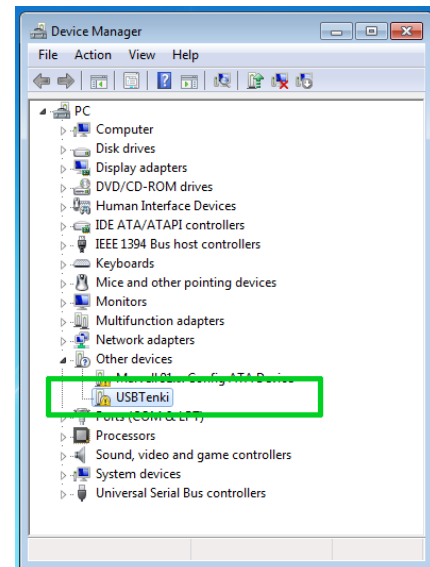
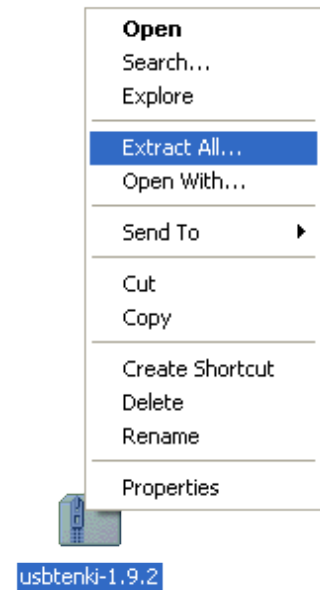
Note: It does not need to be installed in Program Files. In fact, we recommend against manually copying files to the Program Files folder.

1.2) Installing the USB drivers under win7

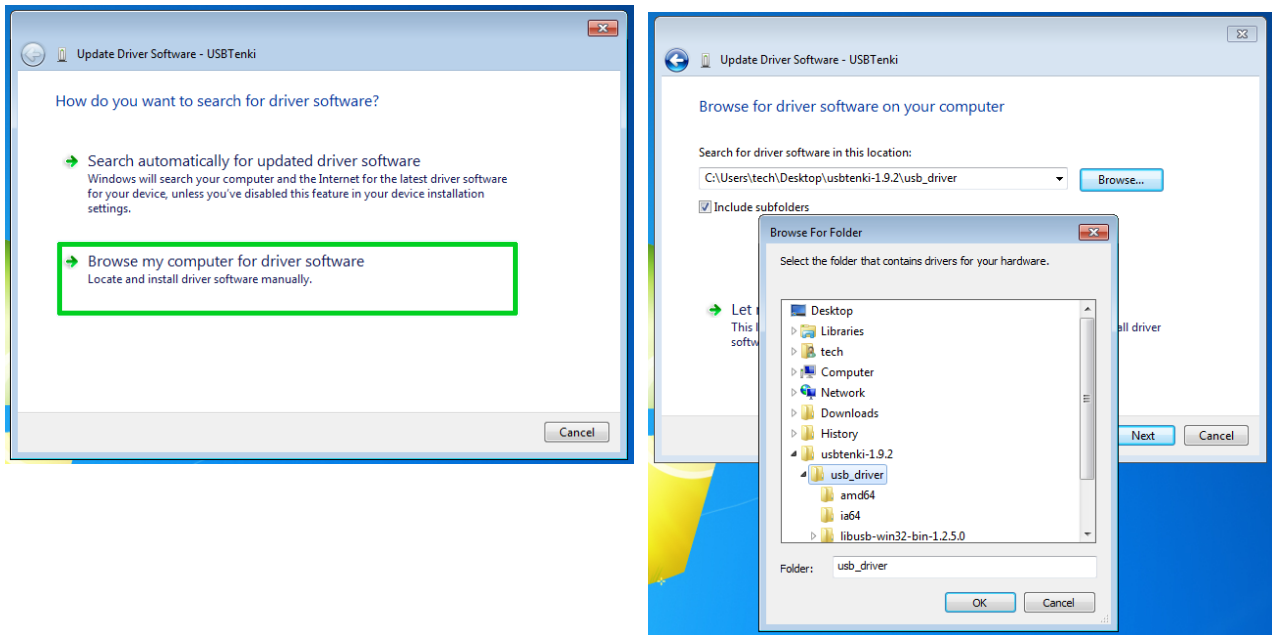
Connect your sensor to a free USB port. Windows will detect it but won't find a driver automatically. You will have to go to control panel->System->Device manager. See screen shot below.



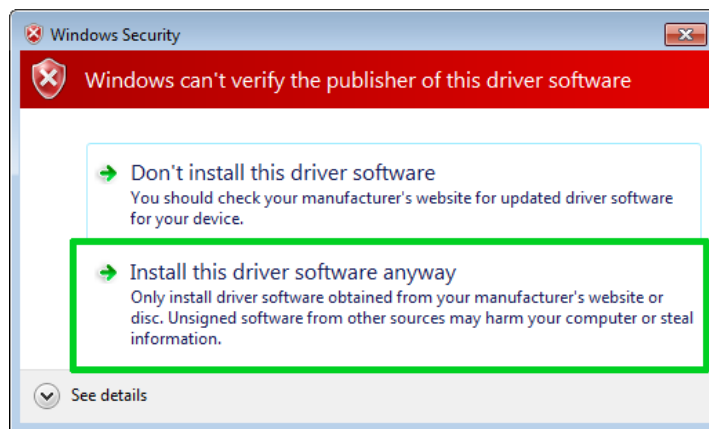
Next, right-click the USBTenki icon and select "Update Driver Software...".



When prompted for how to search for the driver software, select “Browse my computer for driver software” and navigate to the extracted qtenki folder. Select the sub-folder named “usb_driver” and click “Ok” to continue.



During installation, there will be a warning about Windows not being able to verify the publisher of the driver software. This is normal and should be ignored by selecting “Install this driver software anyway”.



After a few moments, installation should complete with a success message:

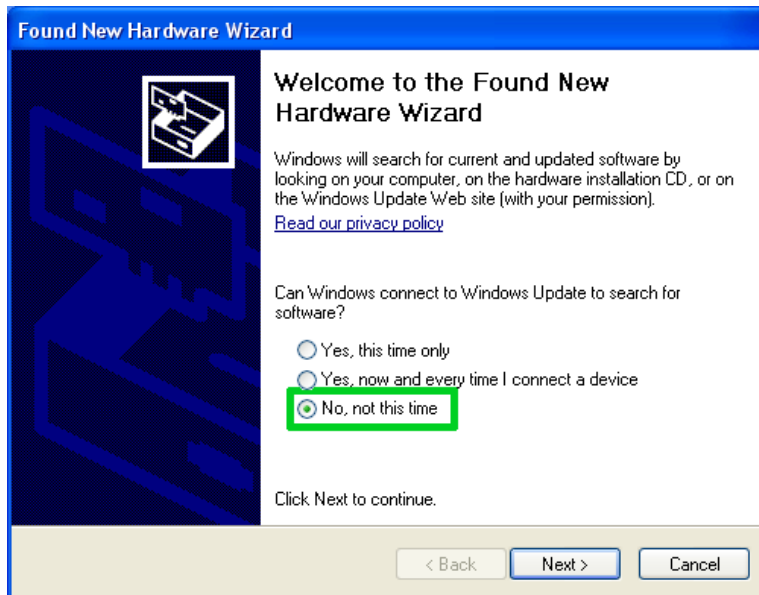
Windows has successfully updated your driver software

Windows has finished installing the driver software for this device:

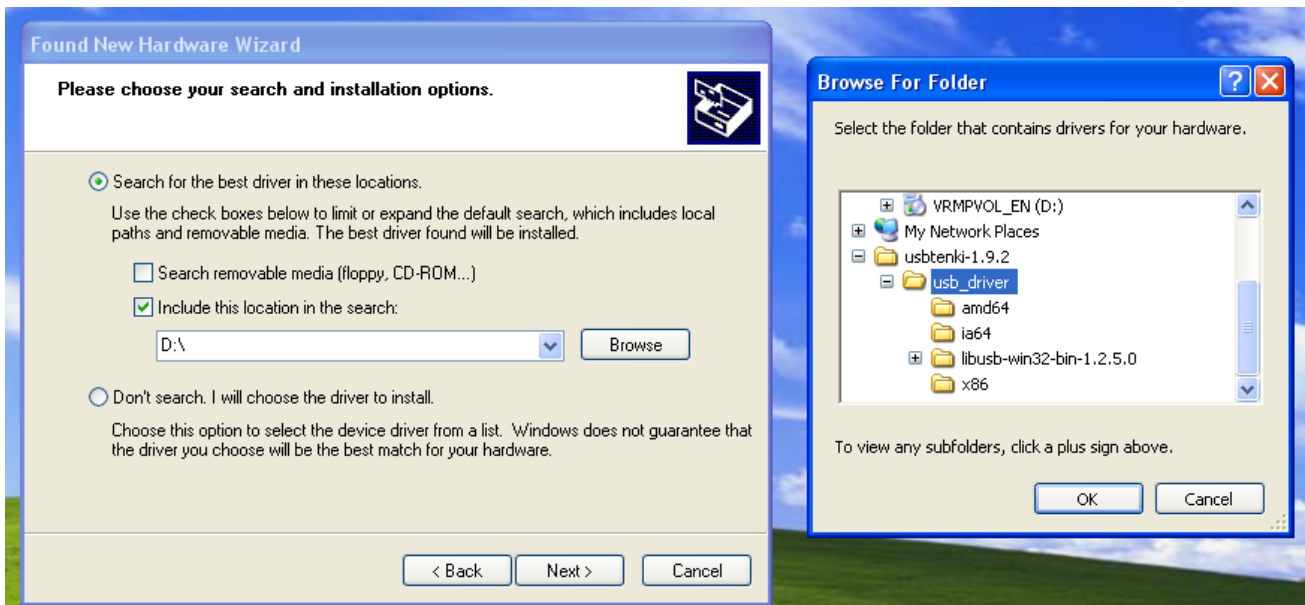


1.3) Installing the USB drivers under winxp

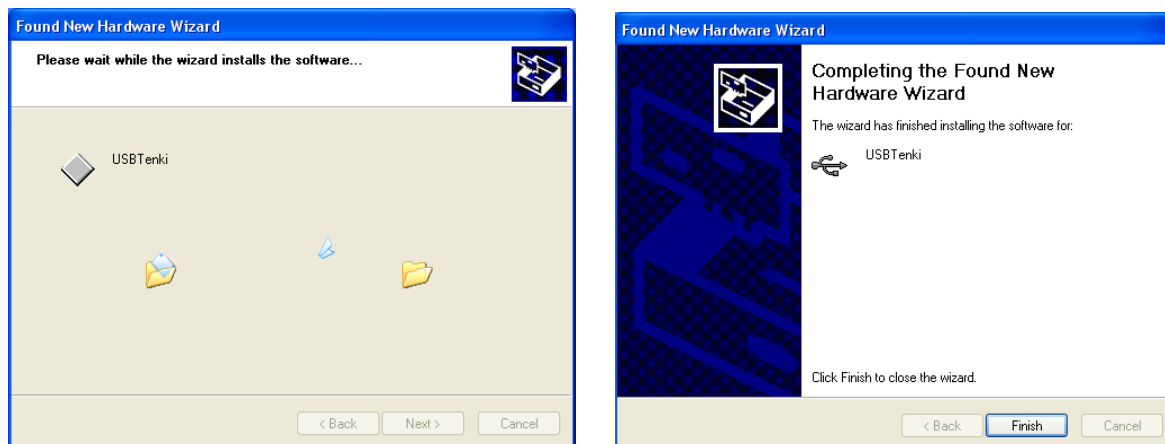
Connect your sensor to a free USB port. Windows will detect it and may open the “Found New Hardware Wizard”, asking you if you want Windows to search for software on Windows Update. Select “No, not this time” and click next.



Select “Search for the best drivers in these locations”, uncheck the removable media box and check “Include this location in the search”. Click browse and navigate to the extracted qtenki folder. Select the sub-folder named “usb_driver” and click “OK”, then “Next” to continue.



The driver should install and after a few moments finish with a success message.



2) Copyright, Disclaimer and History

2.1) Copyright

All the information, pictures, diagrams, tables and texts contained in this manual is Copyright © 2012 Raphaël Assénat. All rights reserved. Partial or total reproduction is not permitted without the Copyright holder's written authorisation, except for personal use.

Trademarks that are mentioned in this manual are the property of their respective owners.

2.2) Disclaimer

Even though I made great efforts and a lot of testing to make sure my products are safe, I cannot be held responsible for any damage(s) or loss(es) caused directly or indirectly by the use of my products, including but not limited to, loss of data, loss of profit, computer/server downtime, device and peripheral damage or failure.

While I believe that all the information contained in this manual is accurate, should any damage(s) occur due to error(s) in this manual, my responsibility will be limited to replacing my product if it is damaged.

2.3) Revision history

February 2012	First version of this manual.